

Introducing the newest
member of the
CoreCheckTM
Security Suite...

The standard for compliance with government security list reviews and reporting.

IQ 1000TM

Easy to Use, Secure, Flexible

The CoreCheckTM Security Suite (CCSS) is a simple to use, secure and flexible toolset that enables organizations to efficiently compare personnel and other data with government watch lists.

Rapid, Consistent Integration and Deployment

By applying the CoreCheckTM Toolset, organizations can consistently and rapidly comply with agency requests for verification and reports of suspicious individuals. CoreCheckTM quickly integrates with existing systems using its API, integration tools and ODBC interface. As a result, agencies and companies respond more effectively to changing requirements.

Automated Scanning and Reporting

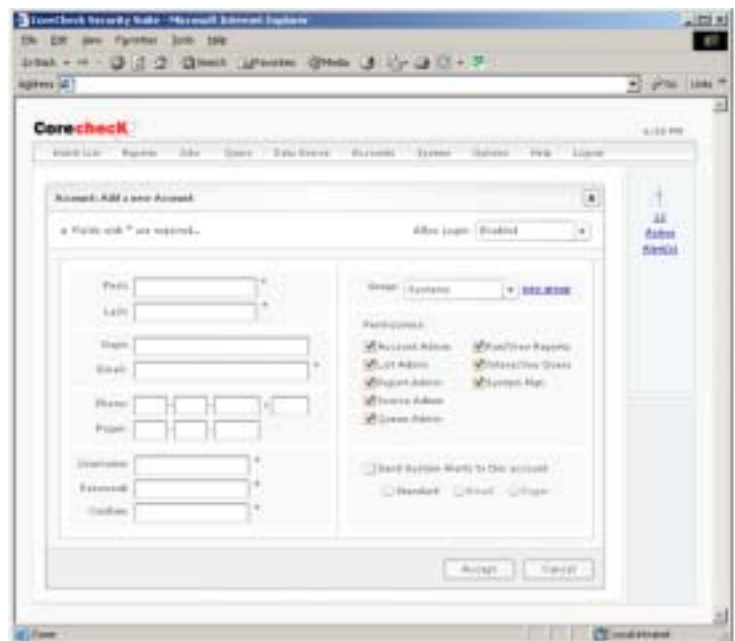
The CoreCheckTM Security Suite automation options include: scheduled data scans, recurring compliance reports, and system audits. CCSS can also be configured to securely email results to selected recipients.

Independent Security Model

The CoreCheckTM Suite maintains a private security model. It includes an independent encrypted database structure that minimizes unauthorized access.

Secure Network Capability

Through tight network controls, the CoreCheckTM Suite can be configured for three modes: a resource on an organizational intranet, a secure access point on the internet, or dual mode.



"CoreCheck permits faster and more thorough reviews."
- U.S. Category X Airport Employee

Features

The CoreCheck™ Suite is designed to be integrated with existing systems using an API (Application Programming Interface), export/import utilities and ODBC links (Open DataBase Connectivity). This allows CoreCheck™ products to run fully automated scans, generate industry specific compliance reports, and produce detailed watch list hit statistics.

The SSL (Secure Sockets Layer) secured web interface allows authorized system users to customize scanning, reporting and auditing options. Advanced security features enhance data and watch list integrity.

Benefits

- Reduce Business Expenses
- Lower Personnel Requirements
- Process Consistency
- Agency Data Security
- Expandability & Flexibility

Approaching watch list security compliancy is a daunting task. It requires resources and a level of consistency that is challenging to most organizations.

CoreCheck™ provides methodologies and a standard toolset to help ensure a better implementation and ongoing maintenance of system compliancy requirements.

Product Components

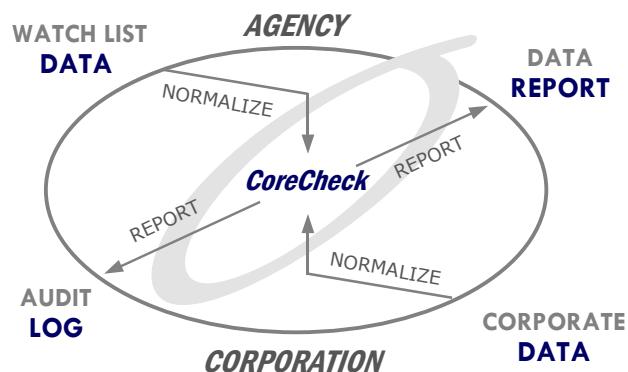
CoreCheck™ functionality is organized into three primary component sections.

- Data Normalization
- Rationalization Engine
- Reporting Engine

Data Normalization transforms both raw Watch List and Business system data into structured data objects.

The Rationalization Engine compares structured list objects with structured system data objects.

Reporting Engine tools provide the mechanisms to identify, audit and report matches and system activity. Enhanced reporting capabilities include: **transaction logs**, **user activity audits** and **watch list update notification**.



Technology Specifications

- 19" Rack Mountable "black box" solutions
- Microsoft Windows 2000 Server Appliance
- Encrypted Relational Data Architecture
- ODBC Interface (Open Database Connectivity)
- Flexible Data Import/Export Utilities
- Enhanced Network Access Control
- Web Management Interface (MS IE 5.5 & up)

Configuration Options

CoreCheck™ is designed to be configured and tuned for deployment in a wide range of customer environments.

Each component module relies on a series of user configurable parameters to optimize performance in a given application. They include:

- Definable Rationalization Rules
- Definable Normalization Rules
- Adjustable Weighted Matching
- Include Key Match Options
- Exclude Key Match Options
- Optional Soundex Matching
- Customizable Reporting Capabilities